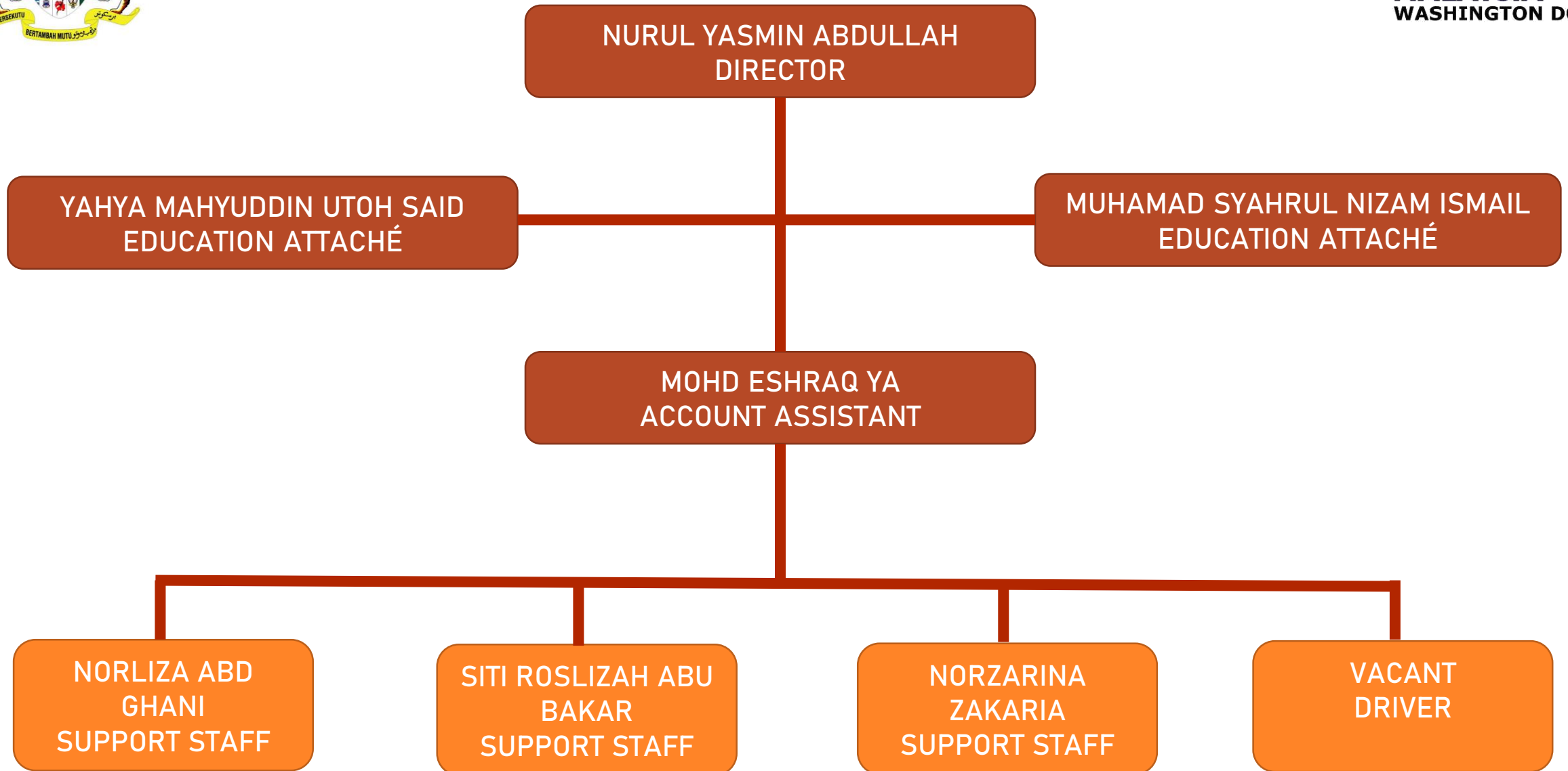




# EMWDC ORGANIZATIONAL CHART





MOHD ESHRAQ BIN YA  
ACCOUNT ASSISTANT

MUHAMAD SYAHRUL NIZAM BIN  
ISMAIL  
EDUCATION ATTACHÉ -  
ADMINISTRATIVE & FINANCE

NURUL YASMIN BINTI ABDULLAH  
DIRECTOR

YAHYA MAHYUDDIN BIN UTOH  
SAID  
EDUCATION ATTACHÉ – STUDENT  
AFFAIRS





SITI ROSLIAH BINTI ABU BAKAR  
(SUPPORT STAFF – FINANCE)



NORLIZA BINTI ABD GHANI  
(SUPPORT STAFF –  
ADMINISTRATIVE & OPERATION)



NOR ZARINA BINTI ZAKARIA  
(SUPPORT STAFF – STUDENT  
AFFAIRS)

